



Parks and Recreation Master Plan

Final Report / August 2022



Acknowledgements

Council:

Mayor: Robb Noon

Councilors:

Linda Alkins

Jordy Carr

Irene Smit

Daryl Vaillancourt

Municipality of Callander Staff:

Ashley Bilodeau, Senior Municipal Director

Elaine Gunnell, Municipal Clerk

Timothy McKenna, Manager of Operations

Katlyn Van Horn, Intern

Public Participants

The Municipality of Callander is grateful for the significant amount of participation and input received from the community to formulate the Parks and Recreation Master Plan (PRMP), including participation in the Parks and Recreation Usage Survey. The Municipality of Callander thanks all participants for their input.



The Municipality of Callander's main office.

Table of Contents

| | | | |
|---|-----------|---|-----------|
| Chapter 1 – Introduction | 4 | | |
| 1.1 – What is a Parks and Recreation Master Plan | 4 | Chapter 4 – Programming and Events | 28 |
| 1.2 – What are the Goals of the PRMP | 5 | 4.1 – Facilitated Programs | 28 |
| 1.3 – The Importance of Recreation and Parks | 6 | 4.2 – Past Programming | 28 |
| 1.4 – Intro to Callander | 7 | 4.3 – Community Events | 29 |
| 1.5 – Community Affiliation Policy and Partnerships | 11 | | |
| | | Chapter 5 –Establishing Purpose | 30 |
| Chapter 2 – Planning Process and Foundations | 12 | 5.1 – Defining Purpose | 31 |
| 2.1 – Guiding Principles | 12 | | |
| 2.2 – The Planning Process | 13 | Chapter 6 – Action Plan | 45 |
| | | 6.1 – 3-year Action Plan | 46 |
| Chapter 3 – Inventory & Comparative Analysis | 15 | | |
| 3.1 – Library | 16 | Appendix A – Bench Plan | 54 |
| 3.2 – Museum/Art Gallery | 16 | A.1 – Bench Plan | 55 |
| 3.3 – Centennial Park | 18 | | |
| 3.4 – Community Centre Property | 19 | Appendix B – Survey Results | 69 |
| 3.5 – South Shore | 21 | B.1 – Survey Results | 70 |
| 3.6 – Beaches & Lake Accesses | 22 | | |
| 3.7 – Parkettes | 23 | | |
| 3.8 – Trails | 24 | | |
| 3.9 –Additional Properties | 26 | | |

Chapter 1 - Introduction



1.1 What is a PRMP?

A PRMP is a document that helps guide future decision-making related to parks and recreation for the next 10-15 years. The document's main purpose is to:

- Inventory the parks and recreation facilities that are available
- Define the purpose of parks and recreational facilities
- Develop policy, budgets and reserves that support the Plan

A PRMP involves gathering information through research and public input and combining the information into sound recommendations for Council's consideration. The information and data that were used to create this PRMP includes:

- Public input (via community survey)
- Demographic data and growth forecasts
- Facility condition and usage level
- Current recreational trends
- Ongoing planning initiatives (Strategies and Plans that have been already been endorsed by Council)

1.2 What are the Goals of the PRMP?

Council has identified the following as the main goals of the PRMP:



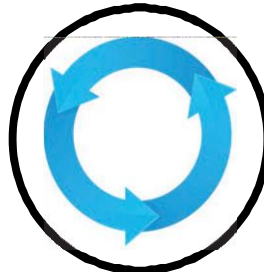
Encouraging New Residents

A consistent goal of all municipalities is to encourage population growth by attracting new residents. This has been identified as a goal across several plans, such as Callander's **Strategic Plan**.



Improving Quality of Life

It has been identified in Callander's Strategic Plan that maintaining and improving the quality of life for its residents is of utmost importance. Maintaining the "Quality of Life" in a Municipality is defined by 5 main concepts including education, environmental quality, person security, civic engagement and work-life balance. Recreation significantly improves quality life (see more in Section 1.3 – The Importance of Recreation)



Keeping Callander Affordable

Identified as a goal in the **Strategic Plan**, and prevalent throughout Council's decision-making is keeping taxes affordable. As such, affordability will play a major part in helping guide decisions for the future of parks and recreation in Callander.

To Align Past Plans with this Plan

Previous plans adopted by Council have set out certain goals regarding the future. It is essential that these plans align with future plans. The PRMP has taken into account the following Plans:

- The Waterfront Revitalization Plans
- Callander Strategic Plan
- Active Transportation Plan
- Economic Development Strategy

1.3 The Importance of Recreation & Park Space

Recreation is defined as a way of enjoying yourself when you are not working.

Park spaces provide residents and tourists a public and free area for recreational activities.

Why are Parks and Recreation Important?

Recreation helps to improve our physical wellbeing, emotional health, and cognitive functions. It also provides an opportunity to enhance social connections.

Parks provide mental and health benefits, to residents and tourists alike. In the right environment, they can also stimulate economic benefits for a community, and increase safety.

Recreational opportunities and parks spaces can create a sense of community by allowing residents to feel more connected to each other along with establishing sense of place individually.

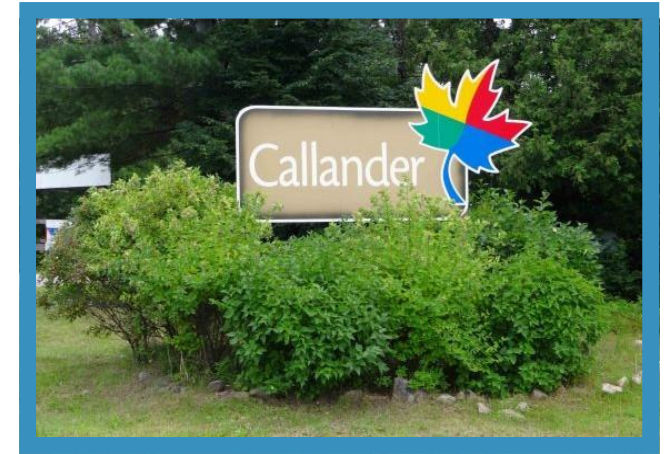


1.4 Introduction to Callander

Welcome to Callander!

Located 15 kilometres south of North Bay, Callander's lush trails, parks, sandy beaches and breathtaking sunsets provide a perfect backdrop for the downtown core. Callander, named after Callander in Scotland, has a rich history in both logging and tourism.

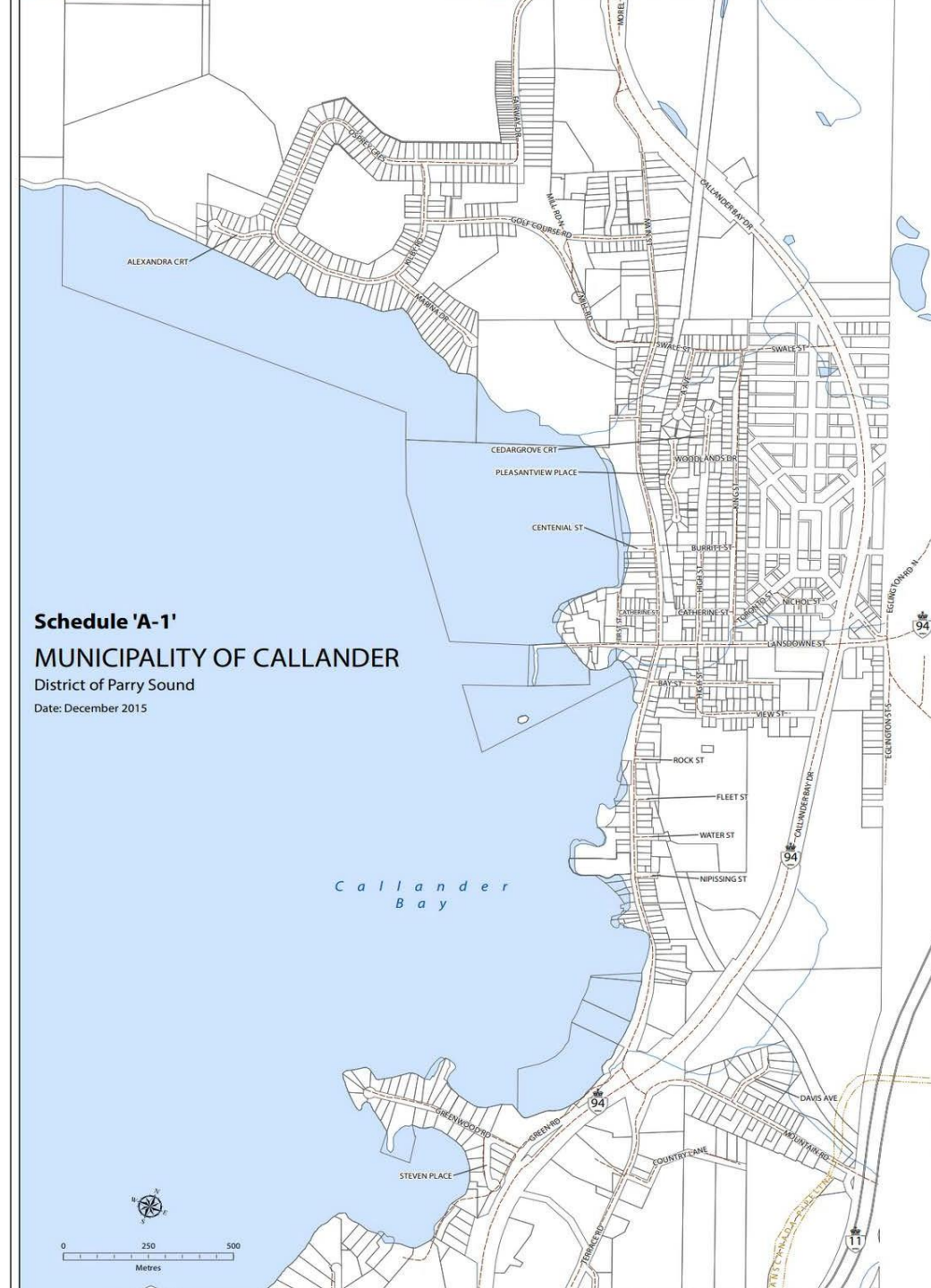
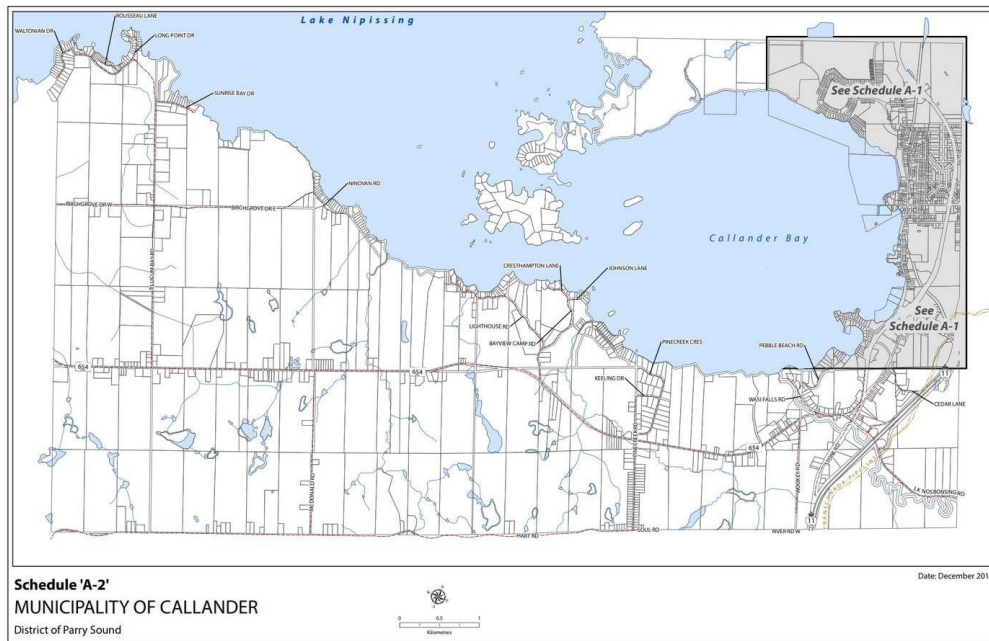
The Municipality offers the attractive qualities of small-town and country living along with the benefits of having a larger city close by. The combination of "best of both worlds" why many of Callander's approximately 4,000 residents have chosen to call the community "home". Residents and visitors alike also appreciate Callander's friendly atmosphere, its rich cultural offering, its affordability and the many recreational opportunities available. Surrounded by water, farmland and trails, and next to major highways, Callander has become a four-season destination for tourism from near and far.



Callander Geography

Callander is a Township in Northern Ontario, located at the southeast end of Lake Nipissing in the District of Parry Sound. The Municipality is located on Callander Bay, just south of North Bay. Callander has approximately 103 square kilometres in area.

Callander's robust geography provided many advantages for recreational opportunities, due to changing topography the mass amounts of greenery as the immediate access to the lakefront.



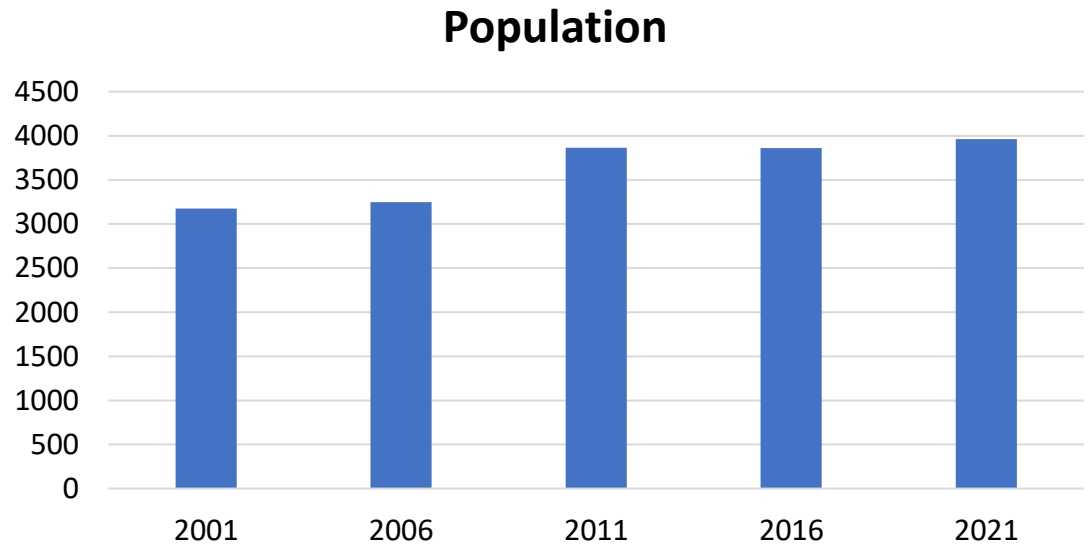
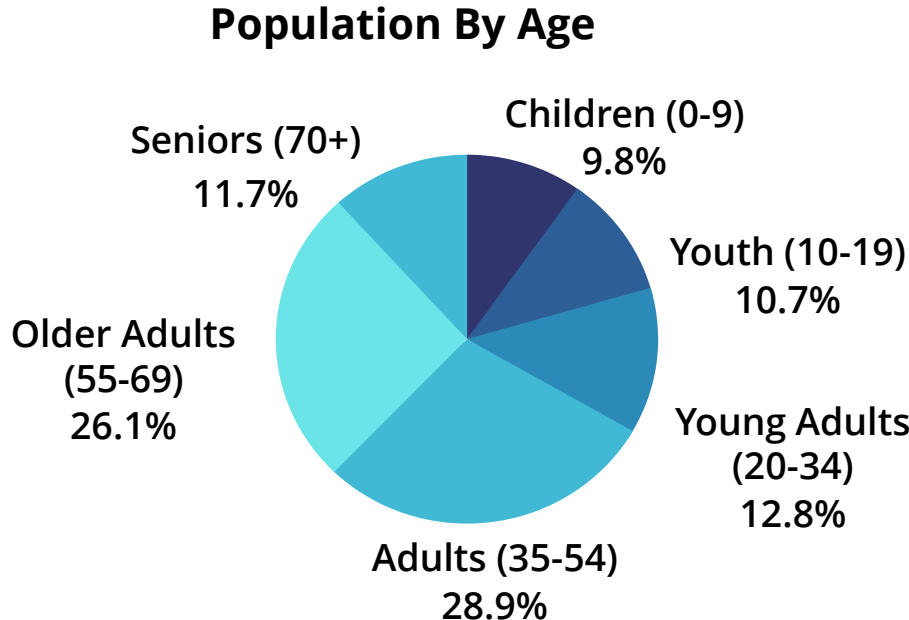
Callander Demographics

Demographics Data Summary

Callander has an older population with the median age being 48.3, and over 37% of Callander’s population being over the age of 55. The majority of Callander’s residents are made up of married couples, with the average household of 2. Callander’s population has continued to slowly grow over the past few decades and is estimated to go up by 30 people a year over the next 10 years.

What does this mean for the PRMP?

This data is important for developing the PRMP as it can help guide decision-making and recommendations related to parks and recreation, ensuring programming is in line with the needs of the community.



Callander's Current Recreation

Callander currently offers many recreational opportunities and facilities that are available for public use. Callander is built along Callander Bay on Lake Nipissing, making access to water for recreational purposes an attractive characteristic of the Municipality. There is plenty to do here during all four seasons, with ice fishing being a key activity in the winter.

Callander also offers a number of annual local events, planned and hosted by the Municipality that are well attended and enjoyed by residents and visitors. Callander has access to the Kate Pact Way, and the Trans-Canada Trail, and offers several other local trails. Though Callander offers very few municipally-run recreational programs, it does facilitate and provide support for activities that are locally run at various municipally-owned facilities. Callander has also worked in partnership with East Ferris to offer joint swimming and youth soccer programs for the area.



Yarlasky Field at the Bill Barber Complex. Callander Youth Soccer Programming.



Playground at Centennial Park

1.5 Community Affiliation Policy & Partnerships

Callander has always encouraged partnerships with other Municipalities, not-for-profits and local recreational service providers to help advance Callander's recreational opportunities. A main partnership worth note is the soccer programming with East Ferris.

Callander also strongly encourages and supports volunteer groups and volunteers in general throughout Callander.

Community Affiliation Policy

Callander has an Affiliation Policy, which reduces rates for applicable organizations and recreational opportunities.

The purpose of this Policy is to recognize that volunteers, NFP agencies, and recreation programmers all play a role in meeting Council's vision from a Parks and Recreation perspective. These rates are meant to encourage social gathering and a sense of place.



Chapter 2 – Planning Process & Foundations

The Importance of Planning

Planning assists in estimating timelines and costs associated with a project. This helps in effectively phasing in projects and building/planning reserves, before commencement of a project.

2.1 Guiding Principles

This Plan is built upon the goals and objectives identified by Council, along with their vision for the future as defined in the 2022 Strategic Plan.



Following the guidelines set out by previous plans:

Council strives to maintaining consistency with the Municipality’s plans.



Maintaining Callander’s Character:

Callander is renowned for its character as a “small town” and its rich history. Protecting and preserving this character and history in future projects is critical to the identity and attractiveness of the Municipality.



Cost Effectiveness:

Council strive to keep costs in mind, providing quality services while maintaining affordability.



Embracing Nature and Offering Healthy Outdoor Activities:

The Municipality promotes and makes use of Callander’s natural surroundings and takes advantage of the outdoor opportunities that contribute to a healthy lifestyle.

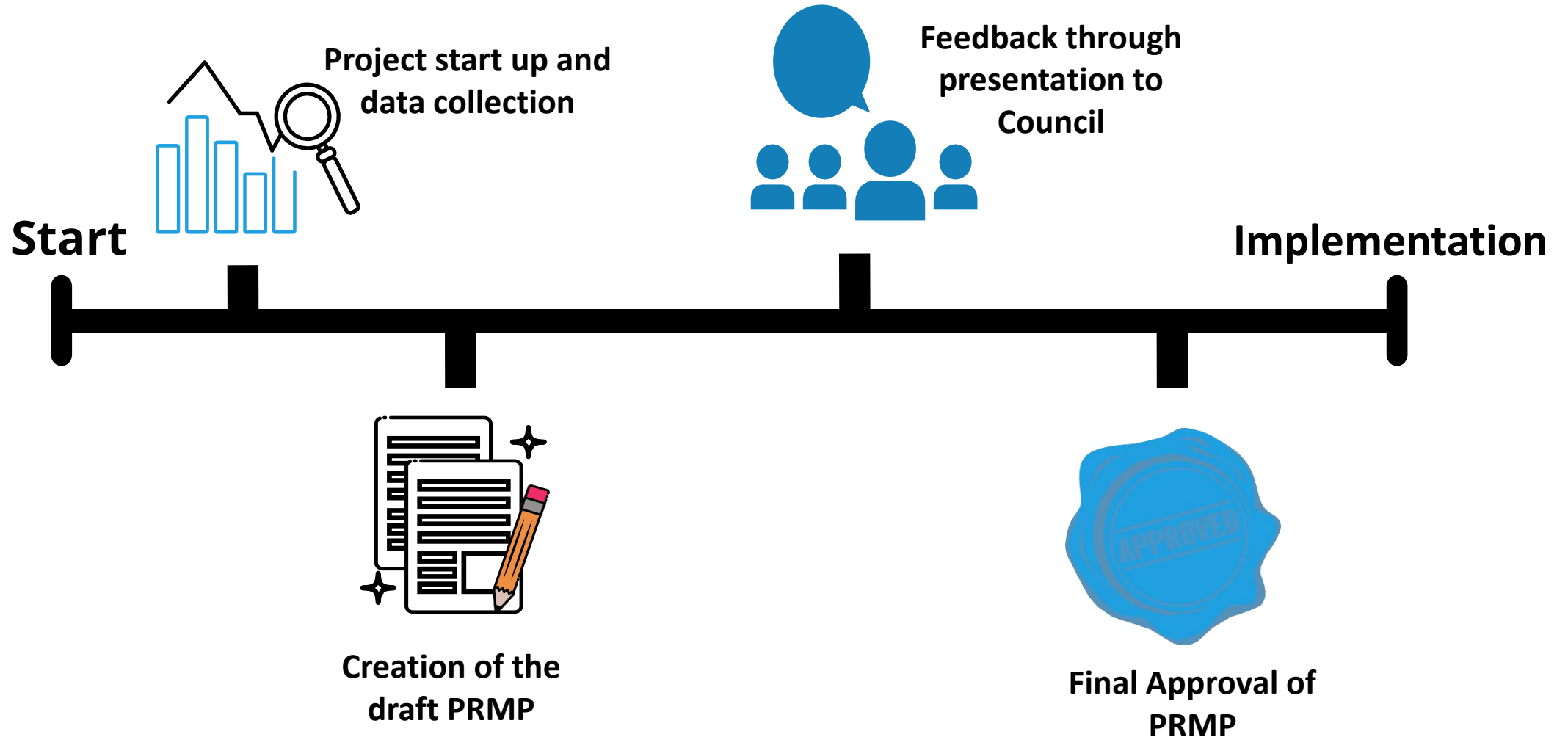


Keeping Callander Accessible and Inclusive:

Council sets to ensure that all of Callander’s future facilities and programs remain accessible to all residents and visitors; that recreational programming and facilities remains inclusive, and available for all age groups

2.2 The Planning Process

The planning process was divided into four separate phases:





1

Phase 1 – Project Start Up/Data Collection

This step involved gathering data for the Plan, which was done in several different ways, including conducting a community survey, and through online and in-person research.

2

Phase 2 – Creation of Draft PRMP

This step involved assembling of the research into a draft version of the Master Plan. As the draft was developed, additional data was gathered as needed to fill in missing information. As the data was collected, design and layout of the Plan was in process.

3

Phase 3 – Feedback through Presentation to Council

Once the draft was completed, it was presented to Council. Council provided feedback to help guide the final draft of the PRMP.

4

Phase 4 – Final PRMP

Following final revisions based on input and recommendations from Council. The final draft was approved by Council on _____. The PRMP will serve as a guiding document moving forward but may be amended by Council from time to time.

Chapter 3 – Inventory

The table below presents the Municipality’s current recreational facilities and park inventory:

| Indoor Facility | Count |
|-------------------|-------|
| Museums | 1 |
| Community Centres | 2 |
| Public Libraries | 1 |
| Canteens | 2 |

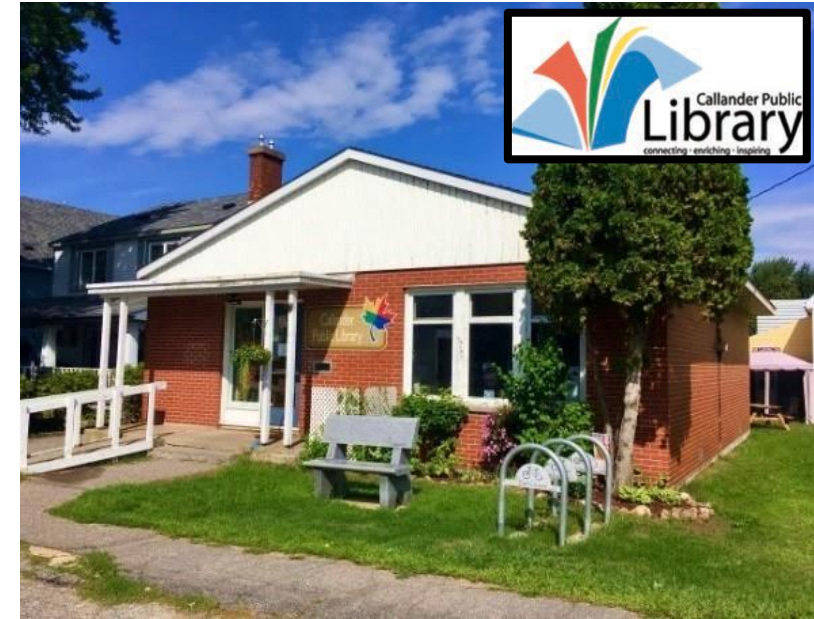
| Outdoor Facility | Count |
|---------------------------|-------|
| Outdoor Rink | 2 |
| Rectangular Sports Fields | 2 |
| Ball Diamonds | 2 |
| Skateboard Parks | 1 |
| Tennis Courts | 1 |
| Playground | 2 |

| Outdoor Facility | Count |
|--------------------|-------|
| Splash Pads | 1 |
| Gazebos | 1 |
| Municipal Dock | 1 |
| Boat Launches | 2 |
| Lake Access Points | 4 |
| Basketball Courts | 3 |

| Outdoor Facility | Count |
|------------------|-------|
| Beaches | 2 |
| Trails | 3 |

3.1 Library

There is one library in the Municipality of Callander. The Callander Public Library is located in the downtown core on Catherine Street. The Library offers a multitude of uses such as, all-age day programming, computers, and many rentable wares such as fishing poles, snowshoes, books, and movies and more! The building is owned by the Municipality, but it is governed by the Library Board appointed by Council. No decisions regarding the Library will be recommended in this document for this reason.



Library

3.2 Museum / Art Gallery

Located on Lansdowne in the downtown core is the Alex Dufresne Museum and Art Gallery. It is owned and operated by the Municipality of Callander. The facility offers a fair-sized art gallery with at least four artists featured annually, there is also a gift shop with many different kinds of merchandise for sale. The Museum has many antiques and relics from Callander's history as a logging town, and many collections involving the Dionne Quintuplets.



Museum

Park Inventory

The table below presents the Municipality’s current park inventory:

| Type of Parks | Name of Parks | |
|--------------------|---------------------------|------------|
| Minipark | Veteran’s Ridge | 0.32 acres |
| | Cenotaph | 0.09 acres |
| | Lake Accesses (4) | 1.6 acres |
| | The Lookout | Not Owned |
| Neighbourhood Park | | |
| Community Park | South Shore | 4.0 acres |
| | Memory Tree Park | 1.0 acre |
| | Sunbeam Beach | 0.5 acres |
| Regional Park | Centennial Park | 6.72 acres |
| | Community Centre Property | 14.5 acres |

3.3 Centennial Park

Located off of Main Street North is Callander's classified as a regional park. It offers a variety of attractions including:

- Large playground
- Outdoor exercise equipment
- Splash pad
- The Lions Den
- Rectangular Sports Field
- Beach
- Swings
- Boat Launch
- Gazebo
- Several benches
- Small swimming dock
- Canteen (commercial grade kitchen, 2 deep friers)
- Washroom & changerooms



Canteen & Washrooms



Centennial Park



Centennial Beach



Playground Equipment



3.4 Community Centre Property

Located off Swale Street is the Callander Community Centre and many assets, including:

- Canteen
- Bill Barber Outdoor Rink
- Skateboard Park
- Yarlasky Soccer Field
- Yarlasky Basebakk Field
- Basketball Courts
- Multi-Use Tennis Courts
- Commercial grade kitchen
- Changerooms/Bathrooms
- Large Hall

Programming:

- Rink schedule during winter months include timeframes for hockey, public skating and shinny hockey
- Facilitated programming with Community Affiliates
- Youth soccer at Yarlasky Field



Bill Barber Rink



Bill Barber Rink



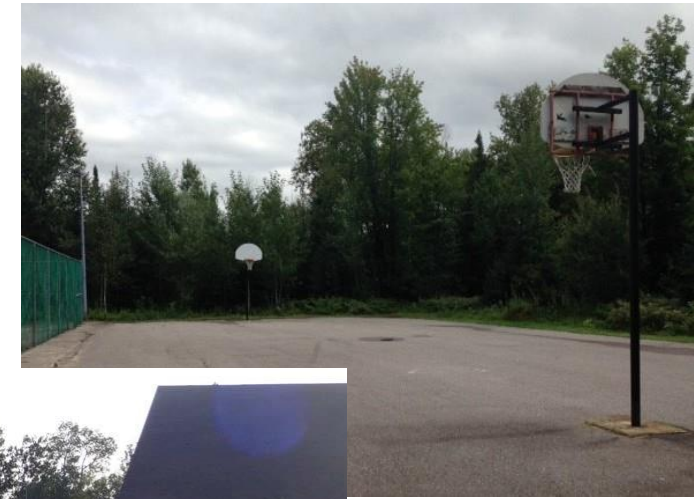
Community Centre

3.4 Community Centre Property (Continued)

Passive uses:

- Exercise
- Walking dogs
- Recreational sports
- Private rentals
 - Weddings
 - Concerts
 - Farmer's markets
- Bike lessons
- Indoor sports

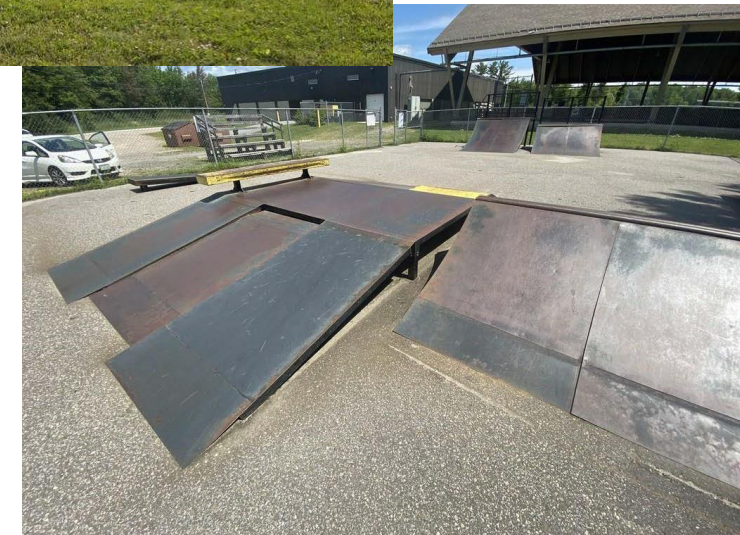
The Community Centre attracts users from throughout the region.



Basketball Courts



Youth Soccer



Skate Park

3.5 South Shore

Callander has several assets located in the South Shore area, including:

- South Shore Community Centre
- Outdoor Rink
- Soccer field
- Baseball diamond
- Small playground

Important notes:

- The South Shore Community Centre is significantly smaller than the Callander Community Centre
- The fields are available for rent and are underused
- Many residents expressed that the distance deterred users from renting/using this facility
- Updates to rural development policy may improve usage rates over the next few years



South Shore Community Centre

3.6 Beaches & Lake Accesses

Sunbeam Beach

Located off of Main Street South, this beach offers a large shoreline and many picnic benches. It is perfect for lake access and swimming and has a wonderful view.

Municipal Pier

The Pier is the main dock in Callander. It offers picnic space, quick parking spaces for boaters, a boat launch, and a large amount of space for residents to fish. Daytime mooring is also available.

Alexandra Court, Ninovan Road, First Street & Pinecreek Crescent Lake Accesses

These access points act as passive unmaintained recreation space that provides the nearby residents an access to the lake during all seasons. Cranberry Trail also has an access point for residents to take advantage of.



Sunbeam Beach



Municipal Pier

3.7 Parkettes

Veterans Ridge

This park connects Main Street and Pleasantview Place. It features many decorations of plant life and natural rocks. Additionally, Veterans Ridge features an engraved rock honouring veterans. There are many benches along the path.



Callander Cenotaph

The Lookout

Although not owned by the Municipality, the Lookout is a popular spot for tourists to picnic and catch a view of Callander Bay.



Memory Tree Park

Callander Cenotaph

The Municipality has one Cenotaph located at the corner of Lansdowne Street and High Street. It is a small green space with plant life and décor, as well as benches and a large memorial statue in the centre of the property. It is used for the annual Remembrance Day ceremony for Callander residents.

3.8 Trails

Callander owns and maintains two trails, the Cranberry Trail, at the end of Cranberry Road, and the Shannondale Trail, off of Swale Street.

Cranberry Trail

Cranberry Trail is a 5 km long trail through the woods, with several rest stops with log benches. There are heritage boards, explaining the natural wildlife and history of Callander throughout the Trail. There is also a lookout tower overlooked the Marsh towards the end of the Trail. This Trail plays host to the local Cranberry Day Festival.

Shannondale Trail

This is a small Trail system that many are not aware of. It consists of the old railway bed and does form part of the Active Transportation Plan.



The Cranberry Trail



3.8 Trails (continued)

Cedargrove/Avenue A Trail

This small trail system is a sewer easement that many nearby residents use as pedestrian access between the two cul-de-sacs. It is not currently maintained by the Municipality.

Additional Systems

In addition to these Trails, Callander is part of the Trans-Canada Discovery Routes Trail System located off the south-end of Pinecreek Road.

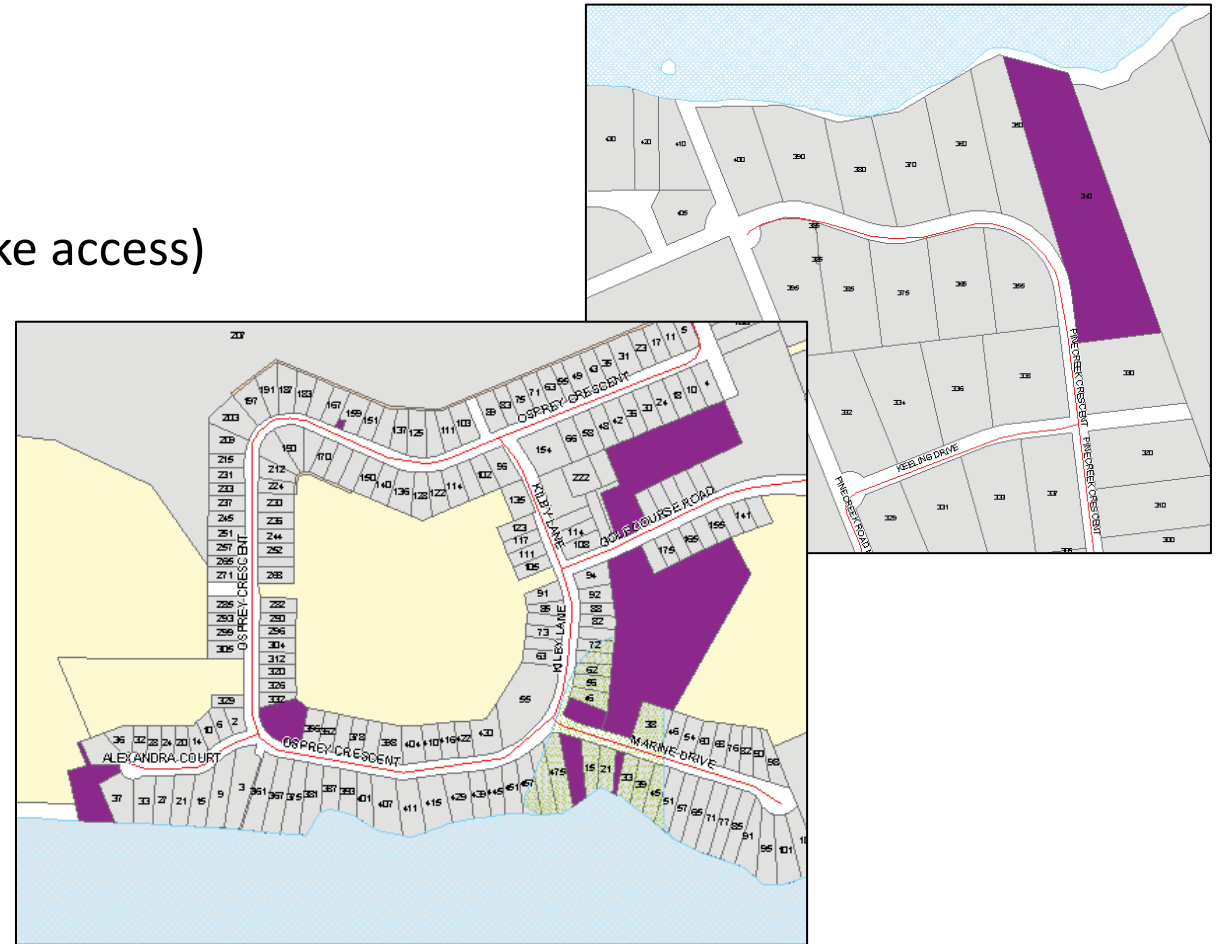
Callander is also part of the North Bay Kate Pace Way located off of Cranberry Road.



3.9 Additional Properties

Callander has several open space properties that could be utilized for more active purposes. Some of the properties which have been identified as park space. Callander also has a lot of lake access property that remain in a vegetated state. Below is a partial inventory of the Municipality's undeveloped properties:

- Ninovan Road Lake Access
- Alexandra Court Lake Access
- Marine Drive Lake Access
- South end of Kilby Lane Road Allowance (lake access)
- 340 Pinecreek Crescent (lake access)
- Osprey Crescent Property
- Golf Course Road Property
- Kilby Lane Property South
- Grand Trunk Island (parkland dedication)



Standards

| Asset | Standard |
|--------------------------|-------------------|
| Community Centres | 1 / 25,000 people |
| Rectangular Sports Field | 1 / 3,520 people |
| Ball Diamonds | 1 / 6,000 people |
| Skateboard Parks | 1 / 2,000 people |
| Basketball Courts | 1 / 500 people |

| Type of Park | Minimum Requirements | Minimum Requirement in Callander | Municipality Has... |
|---------------------|-------------------------------|----------------------------------|---------------------|
| Parkette (Minipark) | No standard | | 2.0 acres |
| Neighbourhood | 2.47 acres / 1,000 population | 9.6 acres | 0 |
| Regional | 3.95 acres / 1,000 population | 15.4 acres | 26.72 acres |
| City-Wide | 13.3 acres / 1,000 population | 51.87 acres | 28.72 acres |

The Standards identify that the Municipality is deficient in established park space and lacks neighbourhood parks. The Standards also identify that the Municipality would benefit from another basketball court.

Chapter 4 – Programming & Events

4.1 Facilitated Programs

Youth Soccer: this is a partnered program offered by Callander and East Ferris. The program is offered for children aged 4-12, depending on registration numbers. This program offers youth an opportunity to be part of a non-competitive soccer league where we encourage sportsmanship and cooperation through sport. Children in the league have an opportunity to learn about soccer while getting exercise, having fun and making friends. This program has been offered every summer since 2013. The programming takes place at Yarlasky Field.

4.2 Past Programming

Swimming Lessons: Callander had partnered with the YMCA to offer swimming lessons at the Centennial Park beach. This programming stopped recently as the YMCA found a new spot to host their swimming lessons.

In the recent Parks and Recreation Usage Survey, there were comments made, requesting that Callander re-establishing swimming lessons.

4.3 Community Events

Callander offers a variety of annual events throughout the year. The event offered are as follows:

- Cranberry Day
- “Lights Up” Christmas
- Easter Egg Hunt
- Family Day Skate
- Fun Fest – Canada Day
- Halloween Night – Community Centre
- Evening of Appreciation (volunteers only)
- Sirens in the Park





Chapter 5 – Establishing Purpose

5.1 – Defining Purpose



The Importance of Establishing Purpose

- Parks and recreational services are gathering places for families and social groups and for individuals of all ages and economic status. Some parks and recreational activities are meant for different purposes; with the intent of giving everyone something to enjoy.
- Establishing purpose of each park and recreational opportunity assists the Municipality in determining a best way to move forward with that space/program. Budgets and reserves can be created to support appropriate maintenance standards and related infrastructure that aligns with the purpose.
- The following is a breakdown of the **PURPOSES:**



Centennial Park

Purpose:

- To act as a regional draw to the municipality, encouraging economic development to our downtown core
- Prime swimming spot for all ages
- For families to enjoy, free of charge
- To be open and available to everyone
- To be an outdoor gathering place
- To encourage play and activity
- To be the main beach access for the public
- To maintain winter lake access for ice huts/snowmobilers

Yarlasky Park

Community Centre Purpose:

- A gathering place for residents and tourism opportunities first
- To offer indoor and/or covered outdoor space for facilitated programming

Field and Sporting Courts Purpose:

- Active recreation, youth soccer programming, available for all to use
- To host both organized and non-organized programming
- To develop team comradery and a sense of belonging





Bill Barber

Purpose:

- To ensure the winter ice season is prioritized towards free skating opportunities
- To attract skaters regionally
- To offer sheltered outdoor recreational programming opportunities in all seasons
- To offer covered sheltered area for tourism opportunities in summer months

Memory Tree Park

Purpose:

- To be Passive park space that encourages reflection





Sunbeam Beach

Purpose:

- Offering a quieter beach area that is more passive
- Great swimming spot
- Picnic area
- Benches to enjoy the sunset

Cenotaph

Purpose:

- Passive park space that encourages reflection





Veteran's Ridge

Purpose:

- Passive park space that is used primarily for ease of access from Pleasantview to Centennial Park

South Shore

Purpose:

- Gathering space for facilitated programs, geared to residents in south shore area
- Neighbourhood park space for residents in south shore area
- To encourage active play with field, rink and playground equipment





Municipal Pier

Purpose:

- The primary purpose of the pier is a destination, an entry into Callander from the lake, attracting residents and visitors on the lake to come into Callander
- Access to the lake
- Encourages economic development
- Recreational fishing, passive space to sit and enjoy

Lookout

Purpose:

- The gateway to the municipality from the south
- A picnic/tourism stop on HWY 94 that attracts many due to its view from the escarpment, overlooking over Callander Bay
- Plow turnaround for MTO





Trails

Purpose:

- To encourage active transportation access into the municipality from an economic development perspective
- To provide accessible passive walking paths with opportunities for sitting and enjoying the scenery/sounds of the wilderness
- To provide natural areas to walk pets
- For education on wildlife and natural elements

Lake Accesses

Purpose:

- To provide water access to nearby residential homeowners
- To provide passive recreational space





Recreational Programming

Purpose:

- To facilitate activities for all ages to encourage gathering, relationship-building, a sense of belonging and community pride



Local Events

Purpose:

- To encourage gathering for all ages, community pride, a sense of belonging, tourism and economic development

A man wearing a blue hard hat and a woman wearing glasses and a blue blazer are standing in a construction site, looking at a large white blueprint held by the man. The background shows scaffolding and construction materials.

Chapter 6 – Action Plan

3-year plan

PARKS & RECREATION 3-YEAR ACTION PLAN

| Park Space - General | | Timeframe | Budget | Notes |
|----------------------|--|-----------|------------------------------------|--|
| Issue: | Not meeting minimum standards for park space in Callander, lacking neighbourhood park space | | | |
| How to Resolve? | Determine which property in Osprey Subdivision is best suited for an active neighbourhood park, and begin process of implementation. Public input should be considered. | 2022-2023 | \$ + Staff Time | Conduct Analysis (4 hrs) Public Input (4 hrs) New playground in Osprey (\$50K) |
| | Conduct analysis on vacant parkland properties and determine purpose for each space based on topography, location and local needs. Current vacant land has not been included in acreage of parks at this time. For each space that has been identified, name areas that are to be treated as park space. Consider whether declaration of land as surplus would be in the Municipality's best interest. | 2023 | Staff Time Only, Potential Revenue | Conduct Analysis (16 hrs) Public Input (4 hrs) |
| | Create a plan to introduce new park space with use of existing municipal properties, and/or exploring opportunities to purchase in areas that are underserved. | 2024 | Staff Time + Purchasing Costs | Conduct Analysis (16 hrs) Public Input (4 hrs) Price of land (if necessary) |
| Issue: | Lack of awareness that certain park spaces exist. Some park spaces do not have names. | | | |
| How to Resolve? | Name park spaces and install signage. | 2023-2024 | Material Costs | Signage at Parks (\$3K each) Installation (4 hrs per sign) |
| Issue: | The Horticultural Society and Beautification Committee have not been provided with clear guidelines, by way of a Memorandum of Understanding or a Terms of Reference, and due to the COVID-19 Pandemic, the relationship has dwindled. | | | |
| How to Resolve? | Implement new terms of reference, review existing acting volunteers, recruit new volunteers who would be interested in sitting on this group/committee | 2023-2024 | Staff Time | Signage at Parks (\$3K each) Installation (4 hrs per sign) |

| Park Space - Lake Access Points | | Timeframe | Budget | Notes |
|---------------------------------|--|-----------|-----------------|--|
| Issue: | Public is not aware of where lake access points are. | | | |
| How to Resolve? | Determine whether existing lake accesses are adequate, whether they are in the proper location and whether adjacent property to lake access points are necessary. | 2022-2023 | Staff Time | Conduct Analysis (40 hrs) - includes site visit, photos, analysis with staff |
| | Install signage informing the public where lake access points are. | 2023-2026 | \$ + Staff Time | Signage at Parks (\$500 each) Installation (1 hr per sign) |
| Issue: | There are no maintenance standards established with lake accesses. | | | |
| How to Resolve? | Create capital plan for each lake access point based on analysis above. Consider sitting areas for more passive recreational space. | 2023 | \$ + Staff Time | Conduct Analysis (8 hrs) Capital costs to be attributed |
| | Establish an ongoing maintenance plan based on the capital plan, identifying number of staff hours necessary to | 2023 | Staff Time Only | Establish guidelines (2 hrs) |
| | Establish guidelines/regulations for lake access points. | 2023 | Staff Time Only | Establish guidelines (2 hrs) |
| Park Space - Centennial Park | | Timeframe | Budget | Notes |
| Issue: | No capital plan exists for the Park. | | | |
| How to Resolve? | Establish a 10 year capital plan for Centennial Park and establish adequate reserves to support the purpose. Ensure ongoing maintenance can be accommodated, or if service delivery is increasing, identify by how much. | 2022 | Staff Time | Conduct Analysis (8 hrs) Capital costs to be attributed for future years |
| | Consider recreational programming to further encourage draw to the area. (see recreational programming) | 2023 | Staff Time | See action plan for recreational programming. |

| | | | | |
|--------|---|--|--|--|
| Issue: | The canteen is currently underutilized. | | | |
|--------|---|--|--|--|

| | | | | |
|-----------------|--|-----------|------------|------------------------------|
| How to Resolve? | Explore opportunities to rent the facility out for the summer, and potentially winter season, to encourage further draw to the area. | 2022-2023 | Staff Time | Request for Proposal (8 hrs) |
|-----------------|--|-----------|------------|------------------------------|

| Park Space - Yarlasky Park | | Timeframe | Budget | Notes |
|----------------------------|--|-----------|--------|-------|
|----------------------------|--|-----------|--------|-------|

| | | | | |
|--------|---|--|--|--|
| Issue: | The sporting fields at Yarlasky Park are underutilized. | | | |
|--------|---|--|--|--|

| | | | | |
|-----------------|--|------|-----------------|---|
| How to Resolve? | Review staffing/board/committee responsibilities to determine the best route, moving forward, to encourage the facilitation of further programs/activities in Callander (see recreational programming action plan) | 2023 | Staff Time Only | Conduct Analysis (20 hrs) Potential need to dedicate funds |
|-----------------|--|------|-----------------|---|

| | | | | |
|--|---|------|-----------------|-----------------------------|
| | Solicit feedback from users of the fields to determine the best way to move forward, to encourage better use of this space. | 2023 | Staff Time Only | Conduct Analysis (20 hours) |
|--|---|------|-----------------|-----------------------------|

| | | | | |
|--------|--|--|--|--|
| Issue: | Community Centre is being used free of charge or at reduced rates and not complying with the Community Affiliation Policy. | | | |
|--------|--|--|--|--|

| | | | | |
|-----------------|--|------|-----------------|---------------------------|
| How to Resolve? | Hold public meeting, discuss with user groups, amend the Community Affiliation Policy based on the purpose of the Community Centre | 2022 | Staff Time Only | Conduct Analysis (40 hrs) |
|-----------------|--|------|-----------------|---------------------------|

| | | | | |
|--------|--|--|--|--|
| Issue: | Bill Barber Rink requires capital investment in order to continue usage in 2023. | | | |
|--------|--|--|--|--|

| | | | | |
|-----------------|--|------|----------------------------|--|
| How to Resolve? | Invest capital dollars to replace rink boards and install a concrete slab to reduce maintenance costs and offer opportunities for summer tourist and recreational programming opportunities, encouraging an off-season use for the Bill Barber Rink. | 2022 | Capital Costs + Staff Time | Capital investment of \$306,000 Staff time dedicated to managing the capital work, and disassembly (40 hours) |
|-----------------|--|------|----------------------------|--|

| Park Space - "Sunbeam" Beach | | Timeframe | Budget | Notes |
|------------------------------|--|-----------|--------|-------|
|------------------------------|--|-----------|--------|-------|

| | | | | |
|--------|-------------------------------------|--|--|--|
| Issue: | The park currently has no identity. | | | |
|--------|-------------------------------------|--|--|--|

| | | | | |
|--------------------------------------|---|------------------|---------------------------------|---|
| How to Resolve? | Establish a name for the beach. | 2022 | Council Time | Include public input |
| Issue: | As a passive recreational beach space, the park is deficient in seating areas. | | | |
| How to Resolve? | Consider bench donation locations at "Sunbeam". Install picnic tables and garbages to encourage better use of space. | 2023 | Material Costs + Staff Time | Picnic Table (\$1K each) Staff time to assemble/install (8 hr) |
| Park Space - Memory Tree Park | | Timeframe | Budget | Notes |
| Issue: | No capital improvements or plan exists for this Park. | | | |
| How to Resolve? | The sign should be replaced and updated. The walking path could be enhanced by encouraging bollard lighting. Create a capital plan and ensure adequate reserves are in place to support the capital plan. | 2024 | Staff Time Only + Capital Costs | Conduct Analysis (2 hrs) Sign (\$2K) |
| Park Space - Cenotaph | | Timeframe | Budget | Notes |
| Issue: | Capital improvements are necessary on the western wall of the park. | | | |
| How to Resolve? | Replacing western wall and installing a ramp for accessibility purposes. | 2022 | Material Costs | \$30,000 |
| Park Space - Veteran's Ridge | | Timeframe | Budget | Notes |
| Issue: | Regular maintenance of park has been problematic, resulting in heavy monetary/staff time investment in 2021. | | | |
| How to Resolve? | Ensure an ongoing maintenance plan exists for park spaces. | 2023 | Staff Time | Conduct Analysis (8 hrs) |
| Park Space - South Shore Park | | Timeframe | Budget | Notes |
| Issue: | Some residents do not know that this Park exists. | | | |
| How to Resolve? | Install Signage at the Park that is visible from Highway 654 | 2023 | Material Costs | \$2K + staff time to install (8 hrs) |

| | | | | |
|-----------------|---|-----------|-----------------|---------------------------|
| Issue: | South Shore Park is significantly underutilized. | | | |
| How to Resolve? | Hold public meeting to discuss viability of this space, and potential uses that could be encouraged at this facility to increase programming/rentals. | 2023 | Staff Time Only | Conduct Analysis (40 hrs) |
| | Determine whether it is in Council's best interest to retain the community centre. | 2024-2025 | Staff Time Only | Conduct Analysis (40 hrs) |
| | If warranted, amend Community Affiliation Policy for South Shore Community Centre, to align with the purpose defined by Council. | 2024-2025 | Staff Time Only | Conduct Analysis (40 hrs) |

| | | | |
|------------------------------------|------------------|---------------|--------------|
| Park Space - Municipal Pier | Timeframe | Budget | Notes |
|------------------------------------|------------------|---------------|--------------|

| | | | | |
|-----------------|---|-----------|-----------------|--|
| Issue: | Pier has been defined in the Waterfront & Downtown Revitalization Strategy, but there has been no capital investment to move this project forward. | | | |
| How to Resolve? | Work on a Marina Plan, with capital plan identified to ensure ongoing process is being made. Establish adequate reserves to put the plan into action. | 2023-2024 | Staff Time Only | Conduct Analysis (volunteer driven) with staff hrs dedicated to assist |

| | | | |
|---------------------------------|------------------|---------------|--------------|
| Park Space - The Lookout | Timeframe | Budget | Notes |
|---------------------------------|------------------|---------------|--------------|

| | | | | |
|-----------------|---|---------|-----------------|--|
| Issue: | Not currently owned by the Municipality, not under municipal control. | | | |
| How to Resolve? | Work on establishing a relationship with the MTO to implement a vision for this site. | Ongoing | Staff Time Only | Staff Time (Ongoing) |
| Issue: | Lack of vision for the property. Site is well known among regional travelers, but has an ability to attract more. | | | |
| How to Resolve? | Make the space more welcoming by ensuring better maintenance in winter months. | Ongoing | Staff Time Only | Conduct Analysis (volunteer driven) with staff hrs dedicated to assist |

| | | | |
|--|-----------|----------------------------|---|
| Implement capital infrastructure to introduce aspects of Callander's history, seeing it is an overarching view of Callander Bay as a whole. Work with the Museum Committee to create a reasonable capital plan for this site Apply for funding to assist in implementation of this Plan. | 2023-2024 | Staff Time Only | Conduct Analysis (volunteer driven) with staff hrs dedicated to assist |
| Consider implementing signage identifying the lookout as a rest stop. | 2024 | Material Cost + Staff Time | Staff work with MTO for sign on road allowance, material cost for sign (\$2K) |

| Trails | Timeframe | Budget | Notes |
|--------|-----------|--------|-------|
|--------|-----------|--------|-------|

| | | | |
|--------|---|--|--|
| Issue: | Active Transportation Plan that has not been implemented. | | |
|--------|---|--|--|

| | | | | |
|-----------------|---|------|-----------------|-----------------------------|
| How to Resolve? | Review active transportation plan to ensure it reflects the intent of Council, begin adding aspects of the active transportation plan into an overarching capital plan, to ensure it's implemented accordingly. | 2024 | Staff Time Only | Conduct Analysis (40 hours) |
|-----------------|---|------|-----------------|-----------------------------|

| | | | |
|--------|--|--|--|
| Issue: | Lack of adequate benches or seating areas along key trail systems and sidewalks. | | |
|--------|--|--|--|

| | | | | |
|-----------------|---|---------|-----------------------------|---|
| How to Resolve? | Ensure adequate sitting arrangements can be accommodated along trails and sidewalks to ensure those with mobility challenges can be accommodated. | Ongoing | Staff Time + Equipment Cost | Benches (\$2K each, or donations) Staff Time (ongoing) |
|-----------------|---|---------|-----------------------------|---|

| | | | |
|--------|--|--|--|
| Issue: | Lack of awareness associated with Shannondale Trail. | | |
|--------|--|--|--|

| | | | | |
|-----------------|---|-----------|-----------------------------|---|
| How to Resolve? | Improve awareness of Shannondale Trail by introducing a sign. Review entrance of trail as a potential viable area for a small parkette. | 2024-2025 | Staff Time + Equipment Cost | Staff Time (20 hrs) Public Consultation Required Signage (\$2K) |
|-----------------|---|-----------|-----------------------------|---|

| | | | | |
|--|--|------|-----------------------------|--|
| | Establishing mapping on where trails throughout Callander exist and how they connect with a larger active transportation plan in surrounding municipalities. Ensure information is readily accessible online and available in printable form at various locations throughout the Municipality. | 2024 | Staff Time + Equipment Cost | Staff Time (20 hrs) Pamphlets (\$5K printing) |
|--|--|------|-----------------------------|--|

| | | | |
|--------|--|--|--|
| Issue: | Subdivision standards do not exist to implement sidewalks in new subdivision agreements. | | |
|--------|--|--|--|

| | | | | |
|-----------------|--|------|-----------|------------------------------|
| How to Resolve? | To update the Official Plan, and ensure sidewalks on at least one side of the road are implemented on all subdivisions moving forward. | 2023 | 3rd Party | 3rd party consultant (\$60K) |
|-----------------|--|------|-----------|------------------------------|

| | | | | |
|-----------------|--|-----------|-----------------------------|--|
| How to Resolve? | Improve awareness of Shannondale Trail by introducing a sign. Review entrance of trail as a potential viable area for a small parkette. | 2024-2025 | Staff Time + Equipment Cost | Staff Time (20 hrs) Public Consultation Required Signage (\$2K) |
| | Establishing mapping on where trails throughout Callander exist and how they connect with a larger active transportation plan in surrounding municipalities. Ensure information is readily accessible online and available in printable form at various locations throughout the Municipality. | 2024 | Staff Time + Equipment Cost | Staff Time (20 hrs) Pamphlets (\$5K printing) |
| Issue: | Subdivision standards do not exist to implement sidewalks in new subdivision agreements. | | | |
| How to Resolve? | To update the Official Plan, and ensure sidewalks on at least one side of the road are implemented on all subdivisions moving forward. | 2023 | 3rd Party | 3rd party consultant (\$60K) |
| | Implement subdivision standards that force developers to build sidewalks in new subdivisions. | 2024 | 3rd Party | 3rd party consultant (\$5-8K) |

| Recreational Programming | Timeframe | Budget | Notes |
|--------------------------|-----------|--------|-------|
|--------------------------|-----------|--------|-------|

| | | | | |
|-----------------|---|---------|-----------------|------------------------------|
| Issue: | No dedicated recreation program staff. | | | |
| How to Resolve? | Explore opportunities to download this responsibility to a Committee or group of volunteers, with a clear mandate, to facilitate programming opportunities throughout the community. | 2023 | Staff Time Only | Conducting Analysis (20 hrs) |
| | Recruit more volunteers that can assist. Increase interaction with clubs/organizations to encourage more programming availability. | Ongoing | Staff Time Only | Ongoing |
| Issue: | Public would like to see more facilitated programs and programming for all ages. | | | |
| How to Resolve? | Amend the Community Affiliation Policy to encourage the facilitation of programming for all ages. Reduced rates for rentals can be established for activities that meet the strategic initiatives of Council. | 2022 | Staff Time Only | Conducting Analysis (80 hrs) |
| | Review staffing/board/committee responsibilities to encourage the facilitation of further programs/activities in Callander | 2023 | Staff Time Only | Conducting Analysis (40 hrs) |

| Local Events | Timeframe | Budget | Notes | |
|-----------------|--|--------|-----------------|------------------------------|
| Issue: | Existing Events have not been defined by Council, lending their scope to be interpreted by the event organizer. Volunteers and staff are unclear as to their roles and responsibilities at the established events. | | | |
| How to Resolve? | Events to be described, in detail, as to what their purpose is. | 2023 | Staff Time Only | Conducting Analysis (40 hrs) |
| Issue: | No staffing level exists within the Municipality, as the position was removed from the organizational structure. | | | |
| How to Resolve? | Committee/staff structure for the hosting of events to be evaluated by Council. Terms of Reference to be established. | 2023 | Staff Time Only | Conducting Analysis (20 hrs) |



Appendix A - Bench Plan

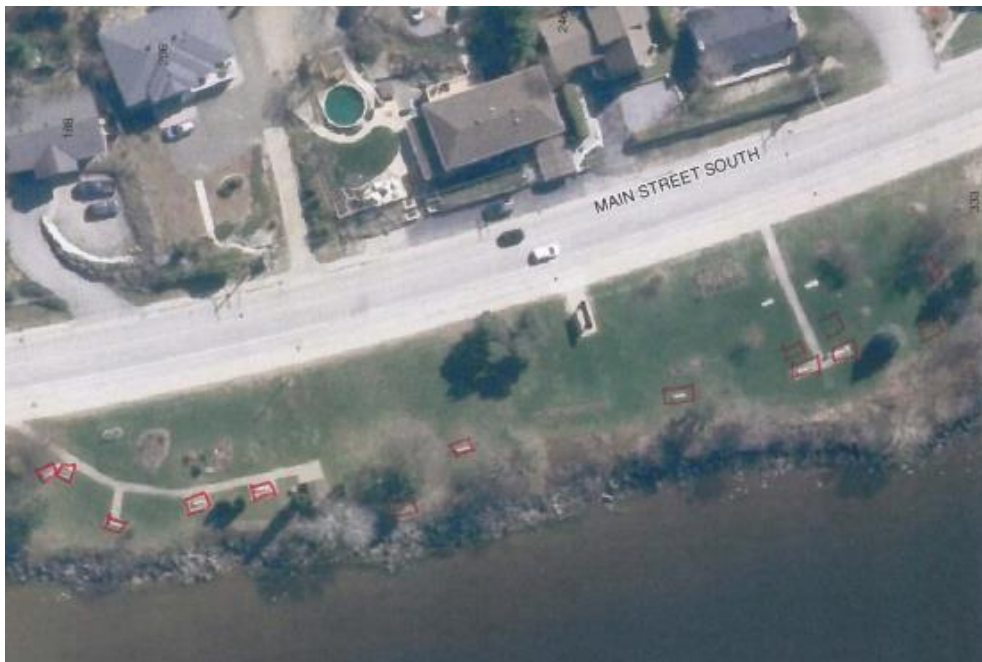
Purpose of Bench Plan

- Residents should be encouraged to use benches through integrated planning, design and management.
- Council has a goal to support high pedestrian movement through open space networks. To encourage high pedestrian movement for all ages and potential accessibility challenges, benches should be strategically placed throughout the Municipality, but especially in higher traffic areas.
- This Bench Plan includes an inventory of existing benches, and a Plan for the future placement of benches

Parks/Trails

Centennial Park

There are 26 Benches at Centennial and 6 picnic benches. As well as one large yellow chair mainly for photo uses.



Memory Tree Park

This park has 14 benches as well as one additional bench at a small lake access point beside the park which was purchased in memorial.

Cenotaph

There are 2 benches located at the Cenotaph.



Sunbeam Beach

There are 4 benches and 2 picnic tables located at this Park.

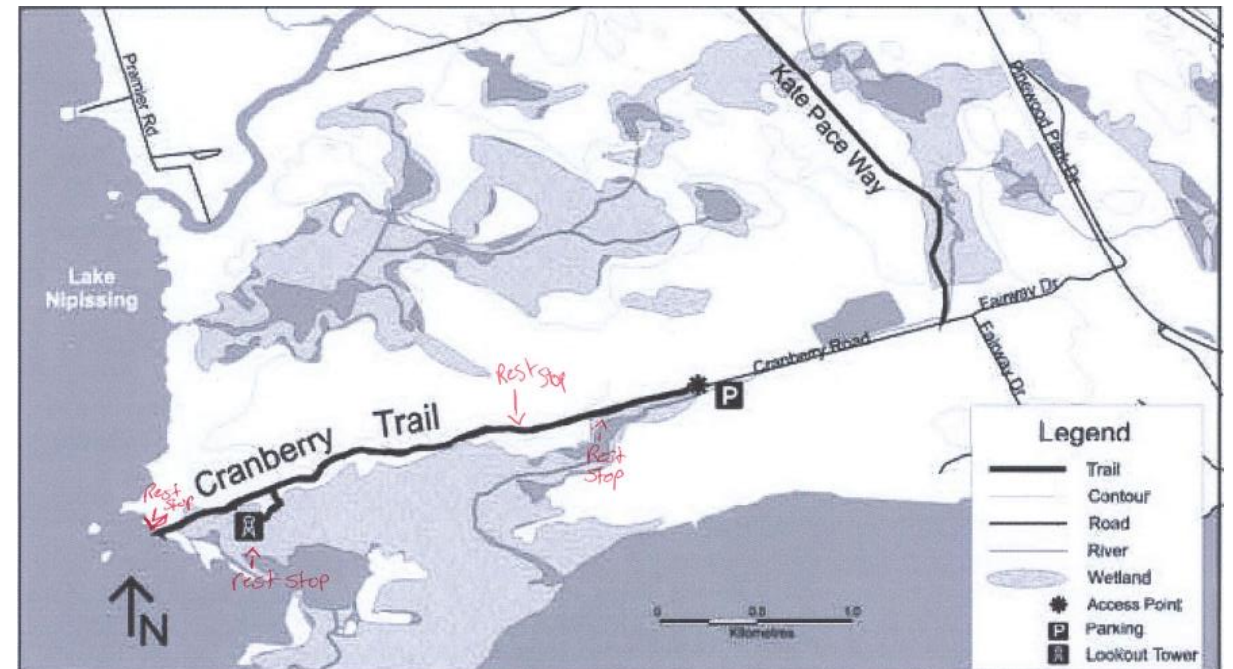


Veterans Ridge

There are 5 benches along this path.

Cranberry Trail

There are under 10 benches located throughout the trail. It has four separate resting areas along the trail with different styles of seating.



Municipal Dock

There is 1 bench, 1 picnic bench, and 1 extra long decorative located here.



Cemetery

There is currently only 1 public bench at the Cemetery.

Other Municipal Benches

Library

There is 1 small stone bench at the Library.



Museum

There are 2 benches at the museum.



Food Bank

There is 1 bench located off the corner of the building.



Lakeside Medical

There are 2 benches located outside the entrance of the building.

Hwy 94 Lookout

There is 1 bench and 5 picnic benches located here. They are owned by the MTO but open for public use. They also state that they were willing to work with the Municipality to improve this facility.



Goals

Below are the main goals for the future benches, these are important to keep in mind while developing the plan.



Maintain Consistency – To make sure all benches are the same design and that all bench plans are aligned.



Strategic Placement of Benches – To place benches strategically to enhance recreation.



Accessibility/Inclusivity – To make sure benches are accessible for all to use.

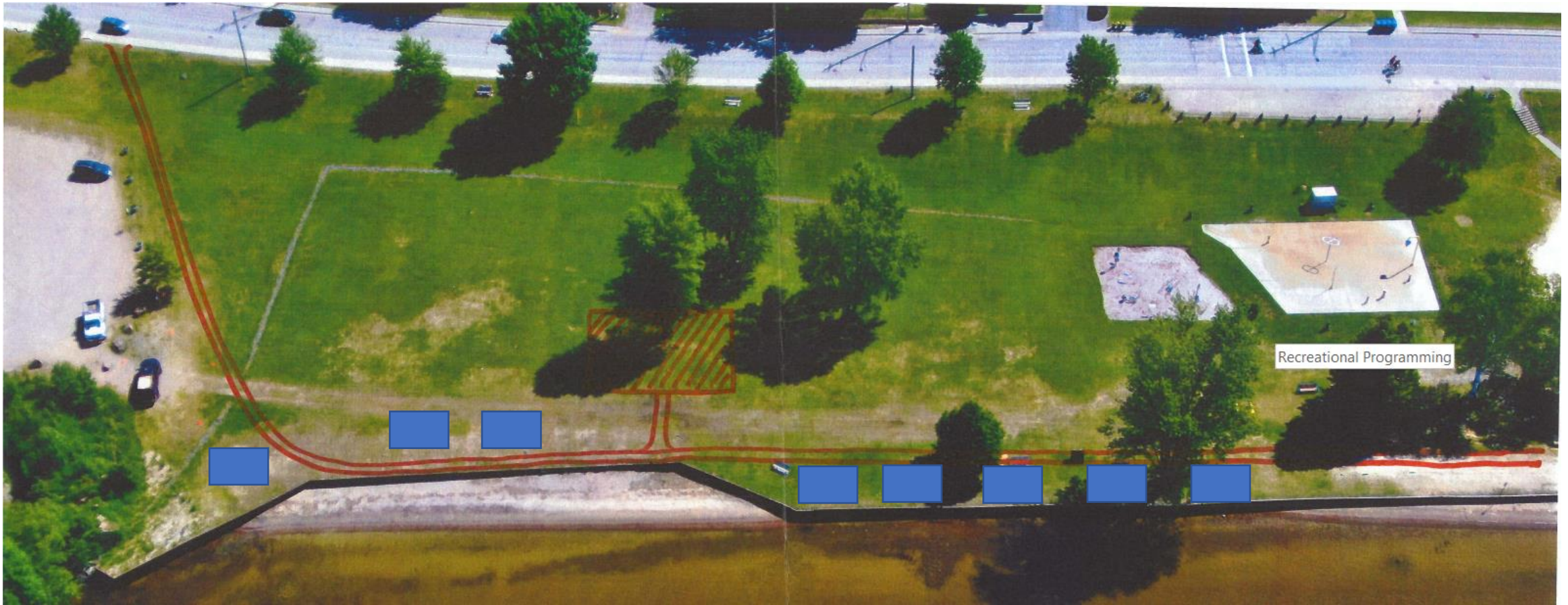


*Proposed Benches
and Resting Areas*

Diagrams/Proposed Layouts

Centennial Park

In the spring of 2022, a concrete path will be put in along the park. Along this path should be put in large concrete squares that will hold memorial benches. There should be more benches placed in the park including benches along the beach.



Cenotaph



Memory Tree Park



★ Benches

Sunbeam



★ Benches

★ Picnic Table

| Park/Facility | Current Benches | Future Benches | Plan/Potential Actions |
|---|--|--|---|
| Shannondale Trail | NA | Additional Benches along trail | <ul style="list-style-type: none"> • Add in additional benches along the trail for rest stops |
| Cranberry Trail | Several rest stops with log benches without back support | Additional benches and rest stops every 300 metres | <ul style="list-style-type: none"> • Add in additional benches every 300 metres • Replace log benches with proper benches • Put benches at the entrance to Cranberry Trail • Make sure benches are accessible for all to get to |
| Community Centre | 1 set of bleachers and long benches for skaters use | Additional benches and picnic benches | <p>The Community Centre and Yarlasky facilities area has no current benches.</p> <ul style="list-style-type: none"> • Picnic benches should be added to the green space • Benches should be added outside of the Community Centre as well as beside the skate park • Benches should be added beside courts |
| Lake Accesses and Other Parks with No Capital Plans | NA | TBD | <ul style="list-style-type: none"> • Review whether picnic tables and benches should be included |

| Park/Facility/Landsdowne | Current Benches | Future Benches | Plan/Potential Actions |
|--------------------------|------------------------------|---|--|
| Municipal Pier/Lansdowne | 2 benches and 1 picnic bench | Several additional benches and picnic benches | <ul style="list-style-type: none"> • Lansdowne St being redone, appropriate seating areas will be taken into account. • Additional benches proposed along the Municipal dock. • Addition of pavilion at shoreline |
| Cemetery | 1 memorial bench | Several additional benches | <ul style="list-style-type: none"> • Should consider benches every 300 metres along road |
| Museum | 2 benches | 2-4 additional benches | <ul style="list-style-type: none"> • Additional benches added in at the side of the museum and at the front of the building |
| Roadways/Sidewalks | NA | Additional benches added throughout high pedestrian areas | <ul style="list-style-type: none"> • Staff to review options for benches along high pedestrian traffic areas (King St, Swale St, Lansdowne St, Osprey Crescent, Kilby Lane, Golf Course Rd, Main St) • Potential areas being outside of municipal office, outside legion, and outside Main Street strip mall |
| Main Street Plaza | NA | Several benches | <ul style="list-style-type: none"> • Benches be added along Main Street Plaza • See diagram below |

These Plans are to be taken into account while arranging proper seating in the downtown core.

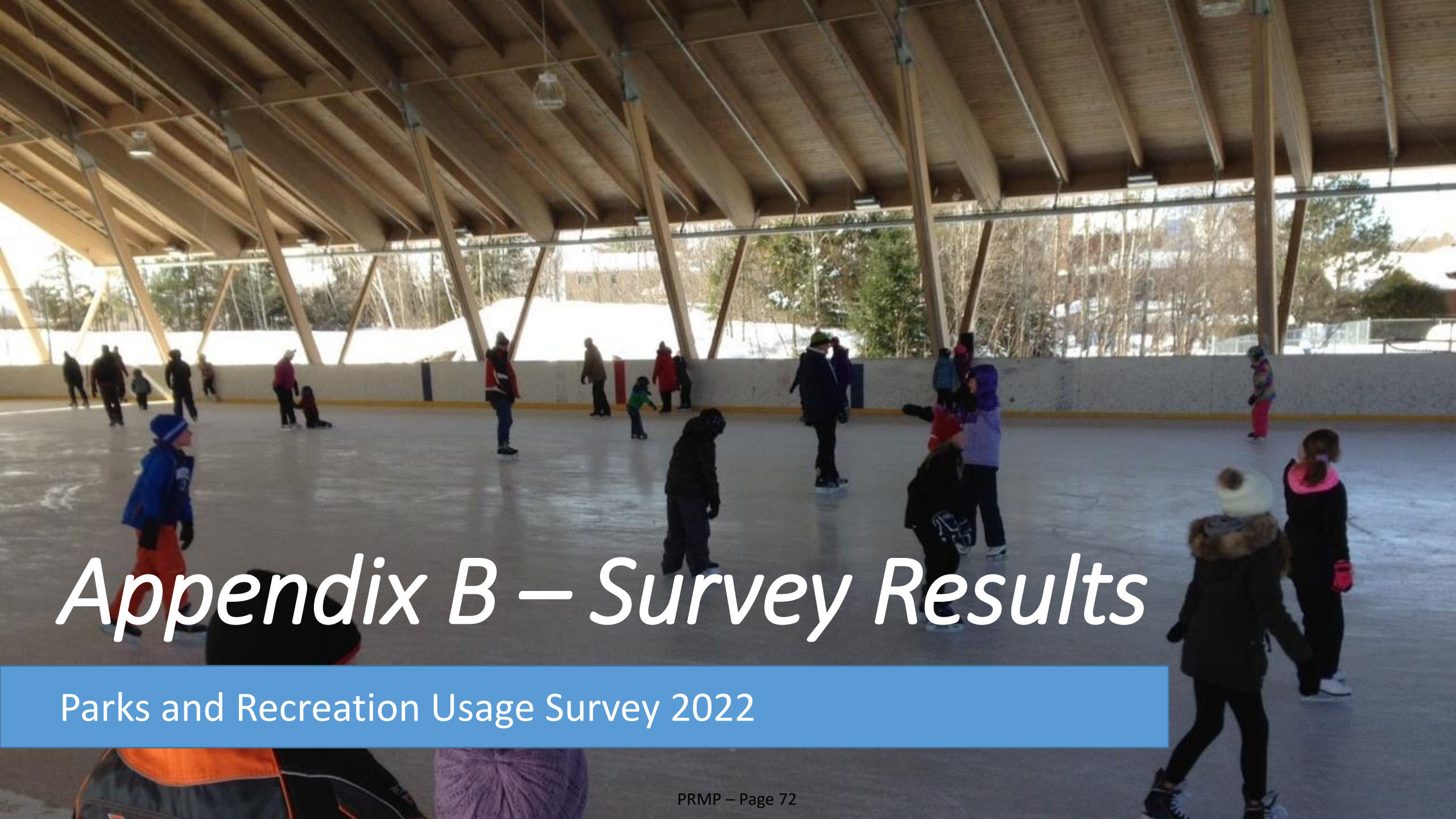


Figure 17: Detail Plan - Lansdowne Street

Plaza bench plan diagrams from Waterfront Revitalization Plan



Figure 19: Detail Plan - Intersection Improvements



Appendix B – Survey Results

Parks and Recreation Usage Survey 2022

The Importance of Community input



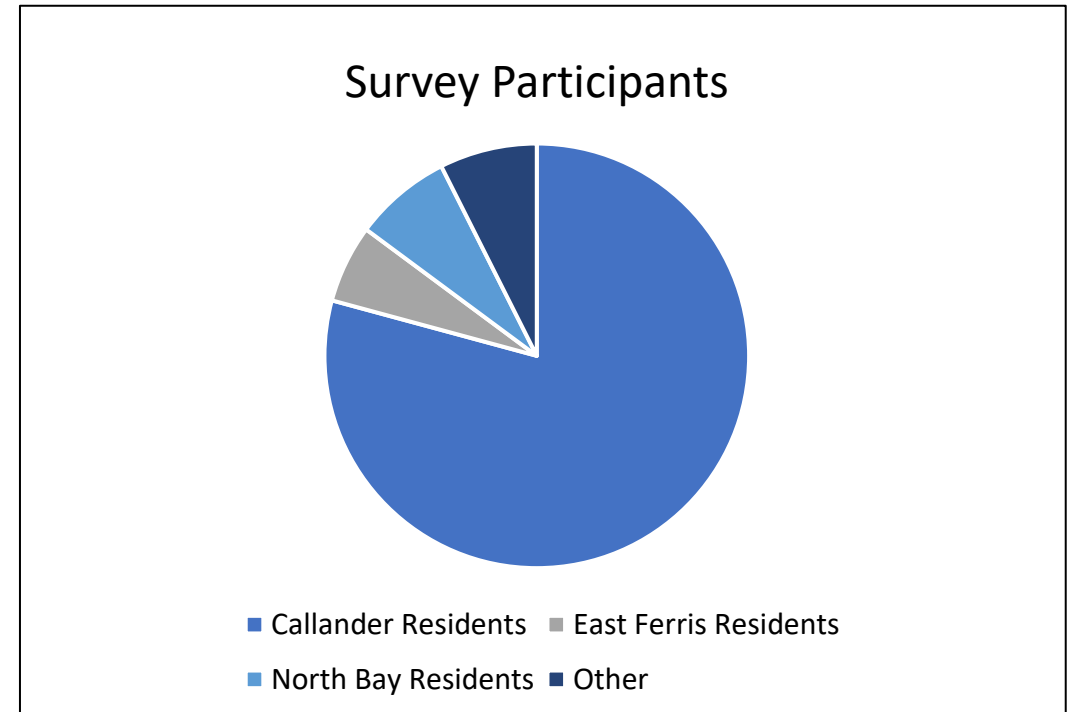
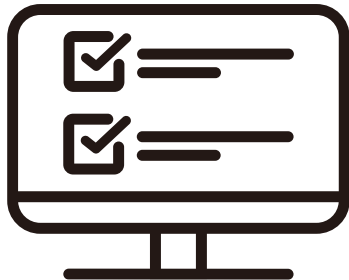
Community input is important to help the Municipality gain a better understanding of local residents needs and aspirations. Community input can also help to empower residents to feel that they have a voice in the decisions being made for their municipality. Community input can also offer a Municipality new points of view and opportunities for new ideas.

Survey Info

Callander conducted a Parks and Recreation Usage Survey to help gather data for the development of the Parks and Recreation Master Plan. The survey was available to the public for the month of February 2022. There were 217 respondents.

Who took the survey?

80% of participants were Callander Residents, 6% were East Ferris Residents, 7.5% were North Bay residents and the remaining 7.5% was split between Nipissing residents, Powassan residents, and Bonfield residents.



Recreation and Facilities Usage

Centennial Park:

32% of respondents said they used Centennial park several times a week. This was identified to be the most commonly used facility by the public.

Bill Barber:

In the winter, Bill Barber arena is most commonly used several times a year. 73% of respondents answered that they used the Bill Barber arena in any other season.

Some common summer uses for the facility are:

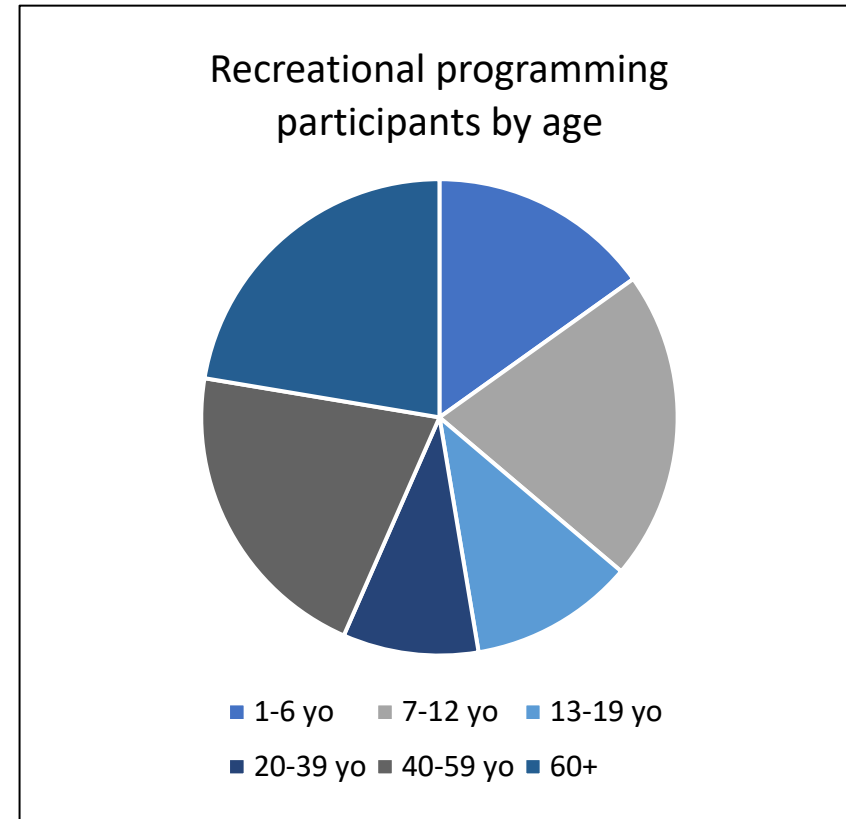
- dog walking/training,
- farmers markets,
- organized sports,
- rollerblading,
- and other organized events.

Cranberry Trail:

This is a popular asset with 45% of respondents answering that they had used this trail several times a month or more. The trail has a variety of popular uses including, family outings, running/walking for exercise, enjoying nature, and for dog walking.

Lake Access Points:

70% of respondents indicated that they had never used a lake access. Many respondents that had used a lake access expressed a desire for increased maintenance of the Alexandria Court access. Respondents who had used an access mentioned using it for many recreational opportunities such as snowmobiling, cross-country skiing, and snowshoeing.

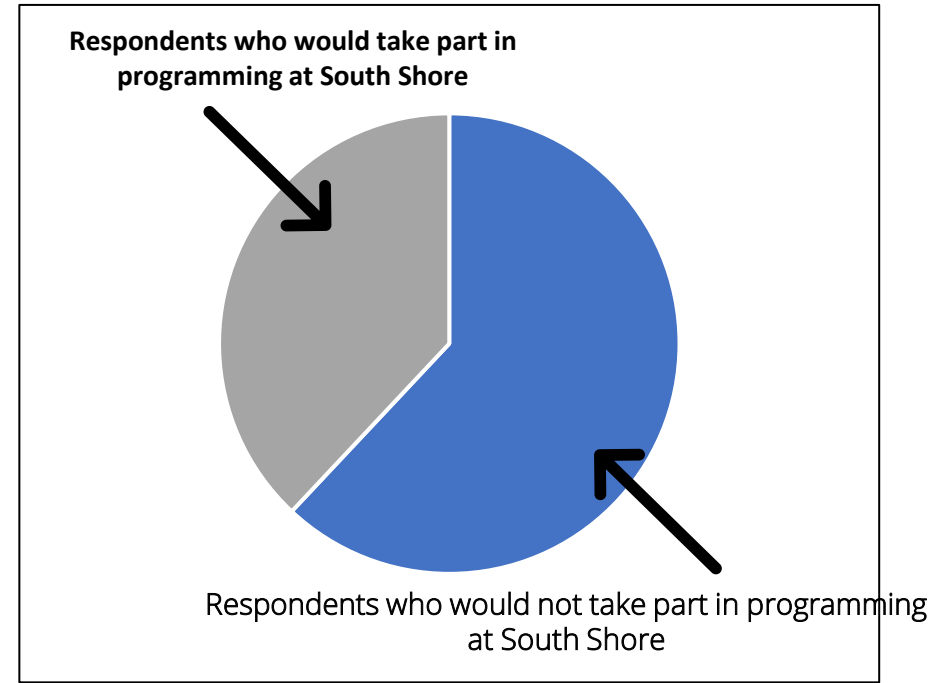


South Shore:

South Shore is the least commonly used facility. (See data below) 65% of respondents answered that they were aware Callander had South Shore facilities. 62% of respondents said that they would not participate in recreational programming in South shore if it were to be offered.

Common Themes:

- A desire for more recreational opportunities (Trails, programs, greenery, etc.)
- The popularity of Centennial Park and Cranberry Trail
- More maintenance of facilities and parks
- Alexandria Court popularity and maintenance
- Shores/beaches, and water quality needed improvements
- Recreation involving a pet dog such as walking, training, and playing
- Many residents expressed a want for more organized spots or that they had to travel out of Callander for them
- Respondents felt facilities are being under utilized
- More senior activities/day programs
- More weekly events/better marketing for events
- Increased safety measures mainly for bike trails



| | SEVERAL TIMES PER WEEK | SEVERAL TIMES PER MONTH | SEVERAL TIMES PER YEAR | SELDOM | NEVER |
|------------------------------|------------------------|-------------------------|------------------------|--------------|---------------|
| South Shore Community Centre | 2.11% 4 | 1.05% 2 | 4.74% 9 | 16.32% 31 | 75.79% 144 |
| South Shore Rink | 3.66% 7 | 2.09% 4 | 7.85% 15 | 12.04% 23 | 74.35% 142 |
| South Shore Field | 2.12% 4 | 1.59% 3 | 4.23% 8 | 12.17% 23 | 79.89% 151 |
| South Shore Play Structure | 2.09% 4 | 2.62% 5 | 3.66% 7 | 11.52% 22 | 80.10% 153 |

Community Survey Recommendations

In the general comments box, there were many suggestions and comments made for the Municipality. The following recommendations are some of those suggestions. There is no guarantee that these comments will be acted on they are mainly just for staff's acknowledgement.

| Category | Potential Actions | Comment |
|------------------------|--|--|
| Safety/Health Concerns | Increased safety measures to be put in place here | "I do wish the skateboard park was in a more visible location, as I do not feel comfortable with it being tucked away/hidden for safety reasons" |
| Safety/Health Concerns | More signage and information on how to prevent this algae made aware to the public | "I am very saddened by the increasing blue green algae blooms. Increase public awareness of how we can prevent this." |
| Safety/Health Concerns | Increased maintenance and check ups | "Goose poop seems to be an issue at Splash Pad" |
| Safety/Health Concerns | More safety measures added to biking paths | "Would love to see safety measures implemented for cyclists" "More safe cycling paths" |
| Safety/Health Concerns | Put in a cross walk at Centennial Park | "Implement a cross walk at Centennial Park for kids" |

| Category | Potential Actions | Comment |
|---------------------------|---|--|
| Docking | Implement overnight docking by law | “Overnight parking for islanders” “Overnight docking for residents” |
| Docking | NA | “Need bird deterrents on docks” |
| Lake accesses and beaches | To be accessed (see section 5) | “It would be great if underdeveloped or overgrown lake access points were made usable. We use the Alexandria access and struggle with broken concrete and rock shore.” “Need better upkeep at Alexandria access. Large pieces of concrete are piled up at the shore.” |
| Lake accesses and beaches | Develop volunteer groups for beach clean up days | “Beach needs to be cleaned” “Clean up the beach” |
| Lake accesses and beaches | NA | “Centennial beach is nearly unusable due to logs” |
| Lake accesses and beaches | Develop Osprey area (see section 5) | “Would like to see a boat launch and lake access spot in Osprey” |
| Programming | See section 5 | “More recreation programs for kids, perhaps day programs. More communication on the programs that are available” |
| Programming | More programming after regular work hours (See section 5) | “Programming during day excludes most people” |

| Category | Potential Actions | Comment(s) |
|----------------------|--|---|
| Programming | See section 5 | “The community Centre is completely under used for rec activities” |
| Programming | Potential partnership to offer this experience | “Ability to rent kayaks and water equipment” |
| Programming | See section 5 | “More volunteer opportunities” |
| Programming | See section 5 | “More winter family activities” |
| Parks and Recreation | Create an area for recreation with a dog | “Need a specific outdoor area for dogs” “Wish we had off leash trails for the dog to run” |
| Parks and Recreation | NA | “Updated tennis court surfaces” |
| Parks and Recreation | See bench plan (Appendix A) | “More garbage cans and benches or picnic tables.” “Shaded rocking chair for seniors to enjoy” |
| Parks and Recreation | NA | “It would be nice to have a basketball net at Centennial Park” |
| Parks and Recreation | See section 5 | “Families deserve a place to be active in the Osprey subdivision, not even any sidewalks” |
| Marketing | See section 5 | “Need proper signage of open spaces and their uses” “Poor marketing” |



Callander

ONTARIO

Four Seasons of Reasons



Parks and Recreation Master Plan 2022